

# MAG55 LED



Marine-Grade  
Aluminium Bulkhead



**Modular.  
Accessible.  
Servicable.**

**40W - 100W**

6,569 lumens - 14,627 lumens

*Patent-Pending*

**Performance** without Compromise.  
**Serviceability** without Precedent.

The MAG55 LED is a patent-pending industrial luminaire designed for heavy industrial and mining applications requiring high reliability, long service life, and consistent performance in demanding environments.

**Modular, Fully Serviceable Architecture**

The luminaire is engineered with a fully replaceable LED light engine as well as control gear (OEM-available), allowing critical components to be serviced or upgraded without compromising the integrity of the IP-rated optical and control gear compartments. This enables efficient maintenance, reduced downtime, and extended operational life.

**Maintained Optical and Environmental Performance**

By retaining the sealed optical chamber and heat-sink assembly during servicing, the MAG55 maintains photometric performance, ingress protection, and thermal stability over the lifetime of the luminaire.

**Lifecycle and Circular-Economy Alignment**

The modular design supports component-level replacement and upgrade, reducing unnecessary luminaire disposal and supporting circular-economy principles in line with current and emerging European sustainability and circular-design requirements.

**Smart-Ready and Upgradeable**

The MAG55 is fully D4i and Zhaga Book 18 ready, enabling integration with smart controls, monitoring, and future digital upgrades. Configuration options are available to suit specific site and application requirements.



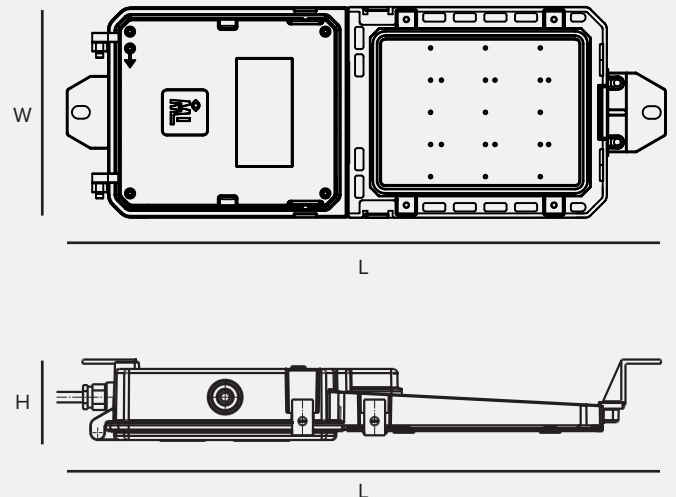
**Patent-Pending Innovation.**  
**Swap Parts, Not Fixtures.**



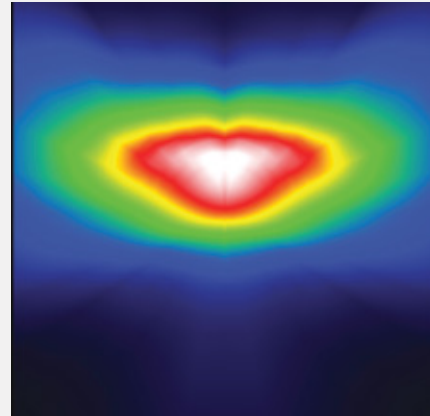
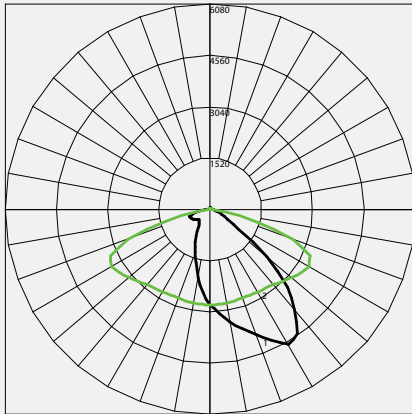
**Fit-For-Purpose:**

- Industrial Lighting
- Outdoor Lighting
- Security Lighting
- Conveyors
- Dusty & Dirty Environments
- Tunnel Lighting
- Plant Lighting

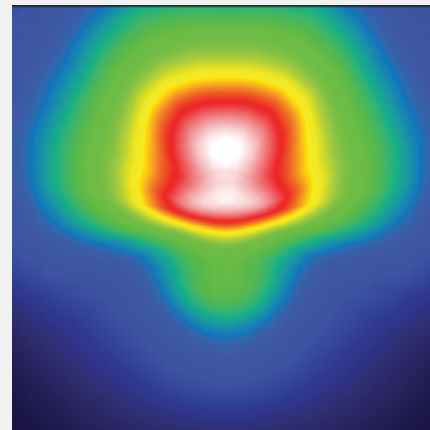
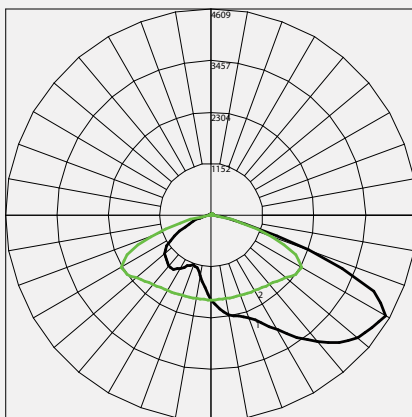
Description	Length (L)	Width (W)	Height (H)
MAG55 LED	575mm	200mm	69mm



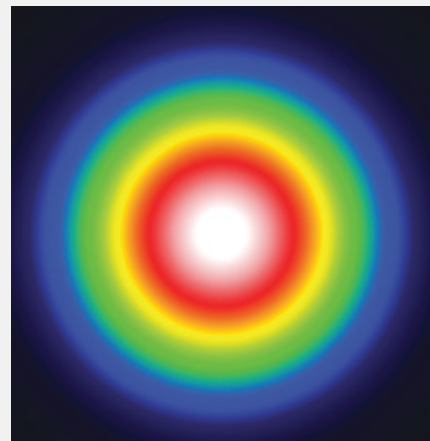
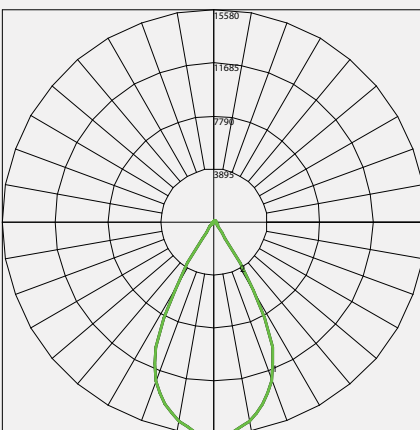
**Type ME**



**Type T4**



**Type T60**



\*Other light distributions available on request

FEATURE	MAG55 LED BULKHEAD						
NOMINAL POWER	40W	50W	60W	70W	80W	90W	100W
LUMINAIRE LUMENS (LM)	UP TO 6,569	UP TO 8,150	UP TO 9,595	UP TO 10,845	UP TO 12,094	UP TO 13,361	UP TO 14,627
LUMINAIRE EFFICIENCY (LM/W)	UP TO 166	UP TO 163	UP TO 161	UP TO 155	UP TO 153	UP TO 148	UP TO 145
COLOUR TEMPERATURE	4000K (STANDARD)   2200K / 3000K / 5000K / 6500K (OPTIONAL)						
LED LIFETIME (HOURS) @ TA 25°C	L90B10 > 100 000 HRS						
CRI	>70 (STANDARD)   >80 / >90 (OPTIONAL)						
DIFFUSER	IK08 (STANDARD)						
NOMINAL INPUT VOLTAGE	220V-240V (STANDARD)   90V-305V (OPTIONAL)						
OPERATING TEMPERATURE	-40°C to 55°C						
SURGE PROTECTION	10kV (STANDARD) 20kV (OPTIONAL)						
IP RATING	IP66						
GROSS WEIGHT	3,45KG						

\* Values shown are AFTER both Thermal and Optical losses. Output will vary depending on optics utilised. Performance values are subject to ±5% variance.

## Emergency Options

FEATURE	MAG55 LED BULKHEAD
OUTPUT POWER	5W (STANDARD)   20W (OPTIONAL)
EMERGENCY DURATION	>1 HR

## Product Code Logic

MAG55	-	XXX	-	X	X	X	-	X	X
FAMILY NAME		WATTAGE		CT	OPTICS	MOUNTING		OPERATIONAL MODE	ZONE RATING
		040 = 40W		2 = 2200K	0 = No Optics	1 = Complete (Lugs Fitted)		0 = Standard	0 = Standard
		050 = 50W		3 = 3000K	1 = T1	2 = Streetlight/Spigot Mounting (42mm)		E = Emergency Maintained	
		060 = 60W		4 = 4000K	2 = ME	3 = Streetlight/Spigot Mounting (60mm)		N = Emergency Non-Maintained	
		070 = 70W		5 = 5000K	3 = FT	4 = Stainless Steel Floodlight Bracket			
		080 = 80W		6 = 6500K	4 = T2-M				
		090 = 90W			5 = T4				
		100 = 100W			6 = T60				

Due to continuing R&D, the above data may change without prior notice. Please consult us for the latest available options. Warranties subject to our standard terms and conditions of sale.

## Related Products



MAGLED MINI



MAGFLOOD



MAGLED GEN II



+27 11 614 4327



[lighting@ilangalighting.co.za](mailto:lighting@ilangalighting.co.za)



[www.ilangalighting.co.za](http://www.ilangalighting.co.za)



24 Julbert Road, Benrose,  
Johannesburg, 2094

A LIGHTING SOLUTION FOR **EVERY** APPLICATION!

ILANGA LIGHTING DISTRIBUTION COMPANY (PTY) LTD - REG 2003/030689/07

**B-BBEE**  
LEVEL **2**  
CONTRIBUTOR

**SABS**  
ISO 9001